

ZEPHYRHILLS ECONOMIC SUMMIT

START
MOVE
GROW

Your business here.



PASCO EDC
NORTH TAMPA BAY, FLORIDA®



Interactive
Maps



Property
Videos



Detailed
Brochures/
Flyers

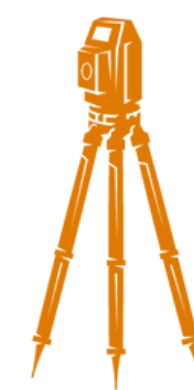
- Industrial Sites Ready for Projects
- ASSESS-EVALUATE-CERTIFY
- Gather data, Assess Sites, Evaluate & Certify Sites
- Enhanced Marketing of the Ready Sites Program

6



TOTAL
IDENTIFIED
SITES

7



ASSESSED
SITES (FY2021)

7



TOTAL
EVALUATED
SITES

2,183



TOTAL
EVALUATED
ACRES



BUSINESS RECRUITMENT READY SITES PROGRAM



ZEPHYRHILLS READY SITE

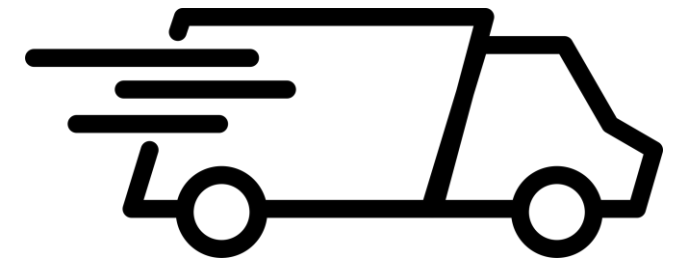


TARGET INDUSTRIES

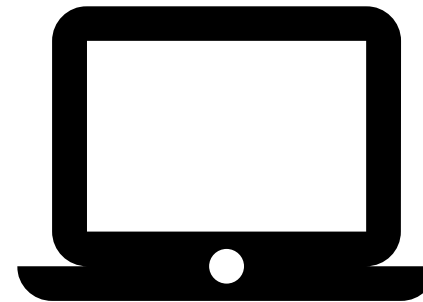
**AEROSPACE,
AVIATION &
DEFENSE**



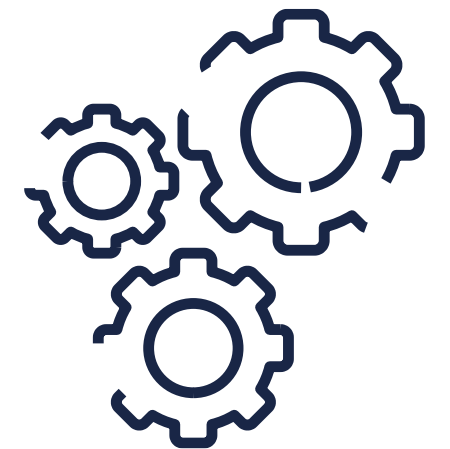
**LOGISTICS &
DISTRIBUTION**



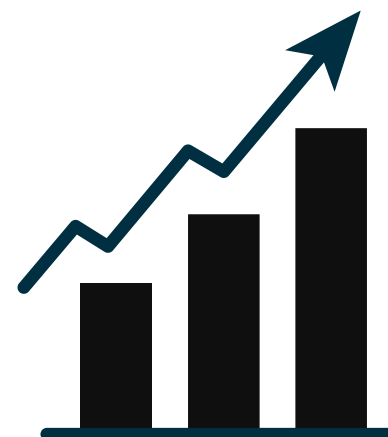
**HIGH
TECHNOLOGY**



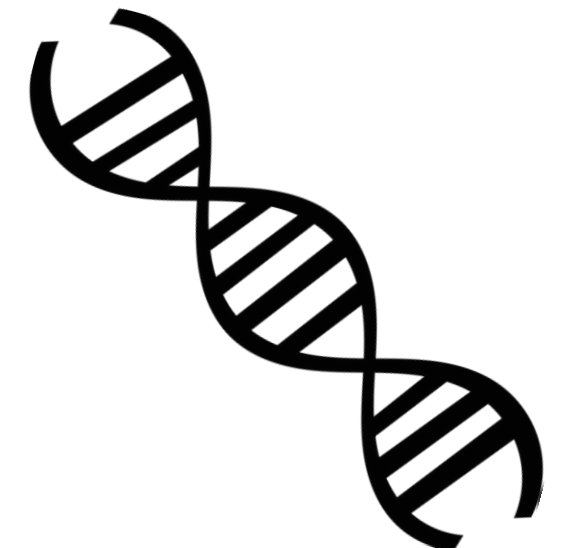
**ADVANCED
MANUFACTURING**

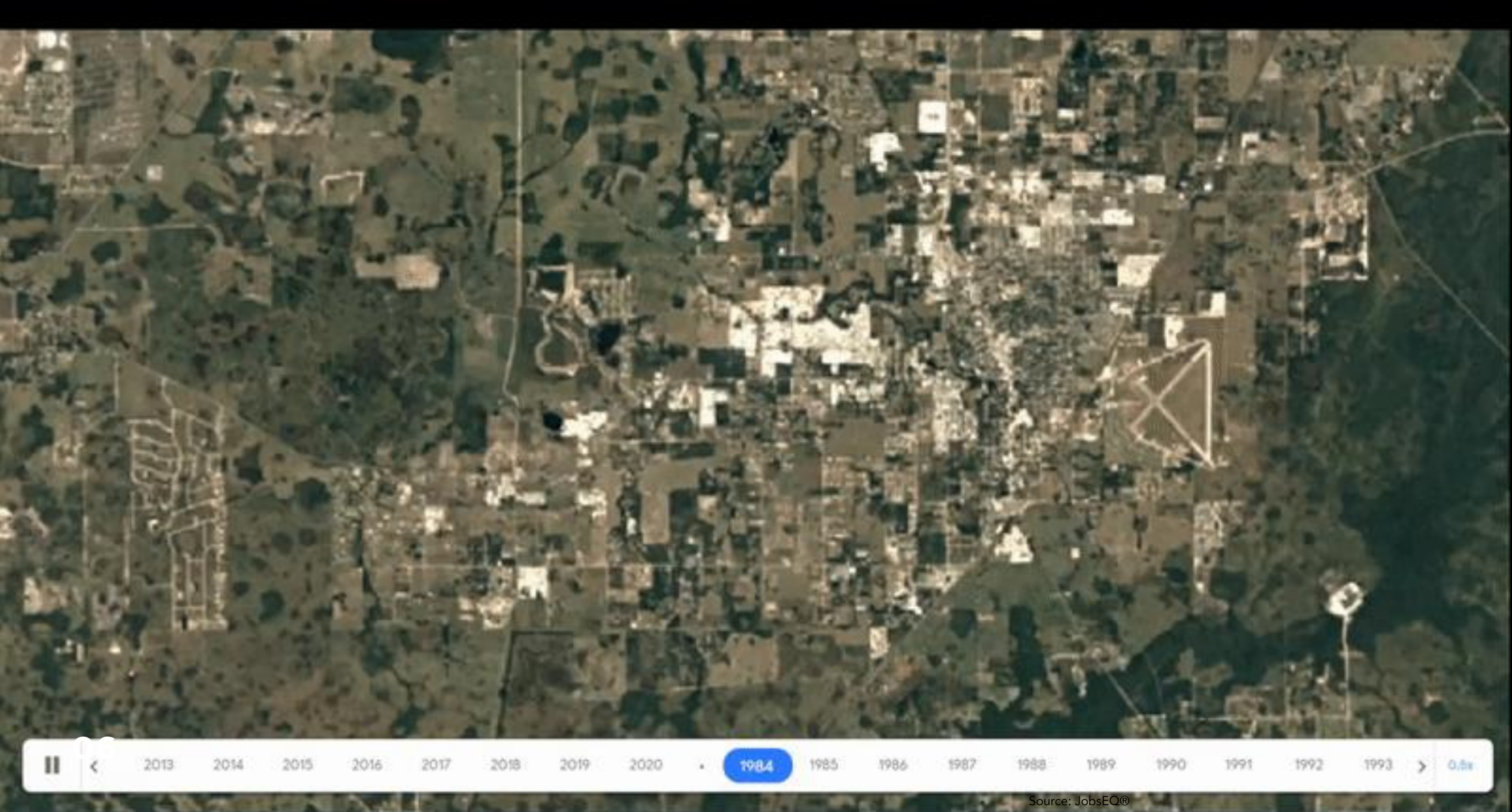


**BUSINESS &
PROFESSIONAL
SERVICES**



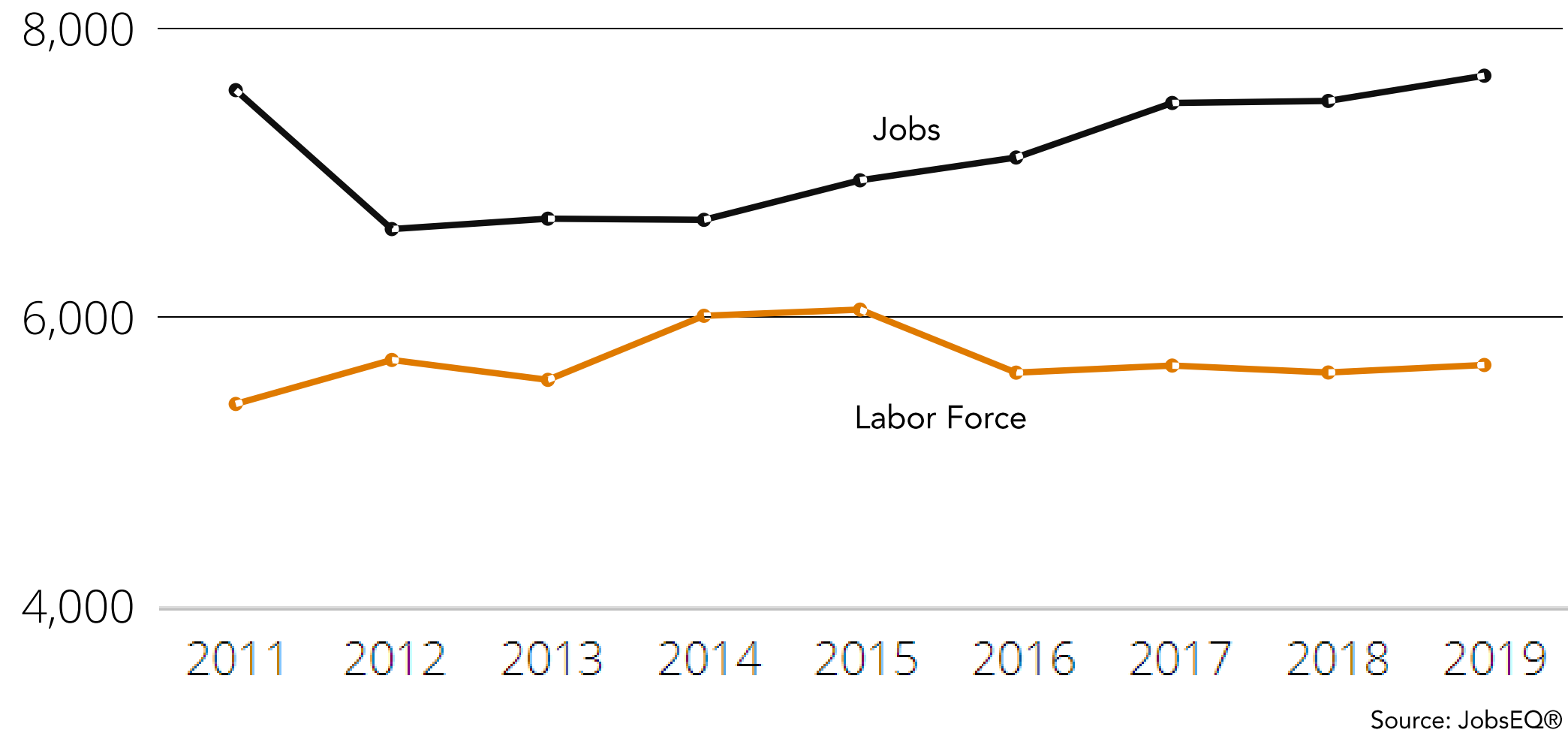
**LIFE SCIENCES
& MEDICAL
TECHNOLOGY**





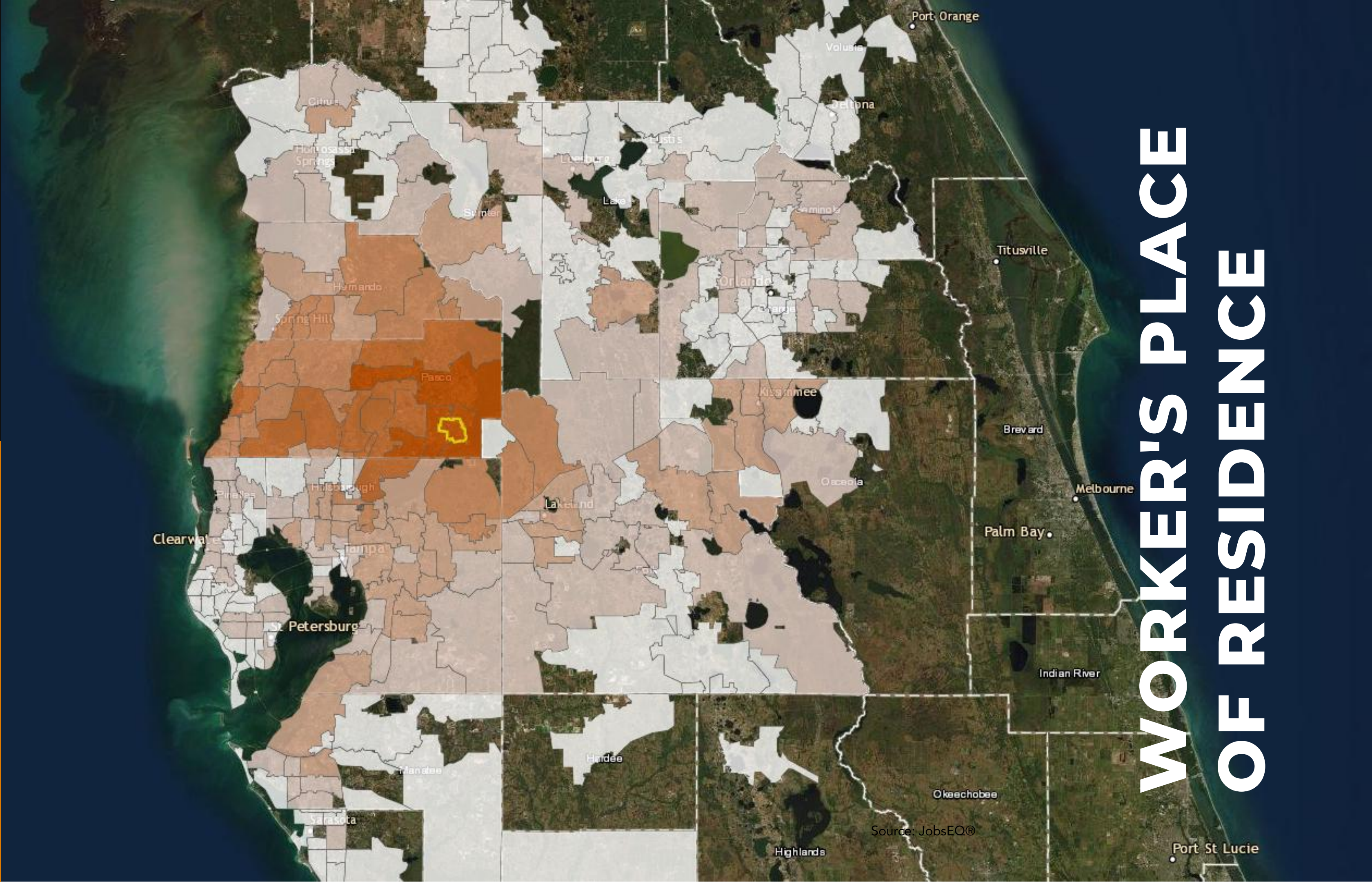
Source: JobsEQ®

Google Earth Timelapse (Google, Landsat, Copernicus)



- **Job growth is outpacing labor force growth**
- **Workers coming from outside the city**

**ZEPHYRHILLS IS
GROWING**



WORKER'S PLACE OF RESIDENCE

TOP OCCUPATIONS, ZEPHYRHILLS, FL

OCCUPATION	EMPLOYMENT	AVG WAGE	GROWTH
Sales and Related Occupations	1,063	\$36,200	0.4%
Office and Administrative Support Occupations	924	\$36,600	1.5%
Food Preparation and Serving Related Occupations	895	\$24,500	0.5%
Healthcare Practitioners and Technical Occupations	728	\$77,700	2.4%
Transportation and Material Moving Occupations	645	\$31,300	2.8%
Healthcare Support Occupations	426	\$28,600	2.5%
Management Occupations	409	\$100,000	3.0%
Production Occupations	376	\$35,600	0.6%
Educational Instruction and Library Occupations	349	\$48,400	-3.2%
Construction and Extraction Occupations	291	\$38,500	1.7%
Installation, Maintenance, and Repair Occupations	263	\$42,100	2.1%
Business and Financial Operations Occupations	238	\$65,800	4.9%
Building and Grounds Cleaning and Maintenance Occupations	204	\$29,800	-0.6%
Personal Care and Service Occupations	200	\$27,300	0.4%
Community and Social Service Occupations	103	\$42,800	-5.7%
Protective Service Occupations	101	\$48,400	1.3%
Arts, Design, Entertainment, Sports, and Media Occupations	93	\$45,800	2.0%
Computer and Mathematical Occupations	74	\$76,700	3.2%
Farming, Fishing, and Forestry Occupations	50	\$32,100	2.6%
Architecture and Engineering Occupations	49	\$70,600	3.1%
Life, Physical, and Social Science Occupations	32	\$67,500	1.9%
Legal Occupations	26	\$87,400	1.9%

Source: JobsEQ®,

Data as of 2021Q1 unless noted otherwise, Data based on a four-quarter moving average unless noted otherwise. ,Wage data are as of 2020 and represent the average for all Covered Employment.





WorkforceCONNECTpasco.com

- Aligning supply & demand of talent
- Online resource for employers and job seekers
- Collaborating with workforce development and education



Tom Ryan, CEE D

Director of Business Development
(813) 926-0827 ext. 228
TRyan@Pascoedc.com



Turner Arbour

Workforce Development Manager
(813) 926-0827 ext. 231
TArbour@Pascoedc.com



QUESTIONS?