



**SAFE STREETS PASCO**  
*EVERYONE GETS HOME SAFE.*

# PASCO COUNTY SAFETY ACTION PLAN

Zephyrhills Economic Development Coalition Project Briefing

DECEMBER 10, 2025

# **PRESENTATION OVERVIEW**

1. What is Safe Streets Pasco?
2. Overview of Key Tasks
3. Project Schedule
4. High Level Crash Trends
5. High Injury Network
6. Safe System Approach
7. How You Can Help



# WHAT IS SAFE STREETS PASCO AND WHY IS IT NEEDED?

---



Every week, 2 people are killed and 15 people sustain life altering injuries on Pasco County roads, a rate higher than the national average.



Detailed assessment of transportation safety issues in the region.



Identification of new feasible safety improvements, as well as strategies to build safety into new developments.



Integration into other plans, like the Long-Range Transportation Plan, updated policy language and engagement materials.

# KEY TASKS

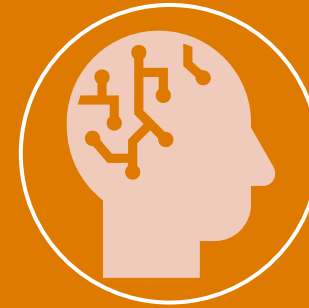
---



Crash  
Analysis



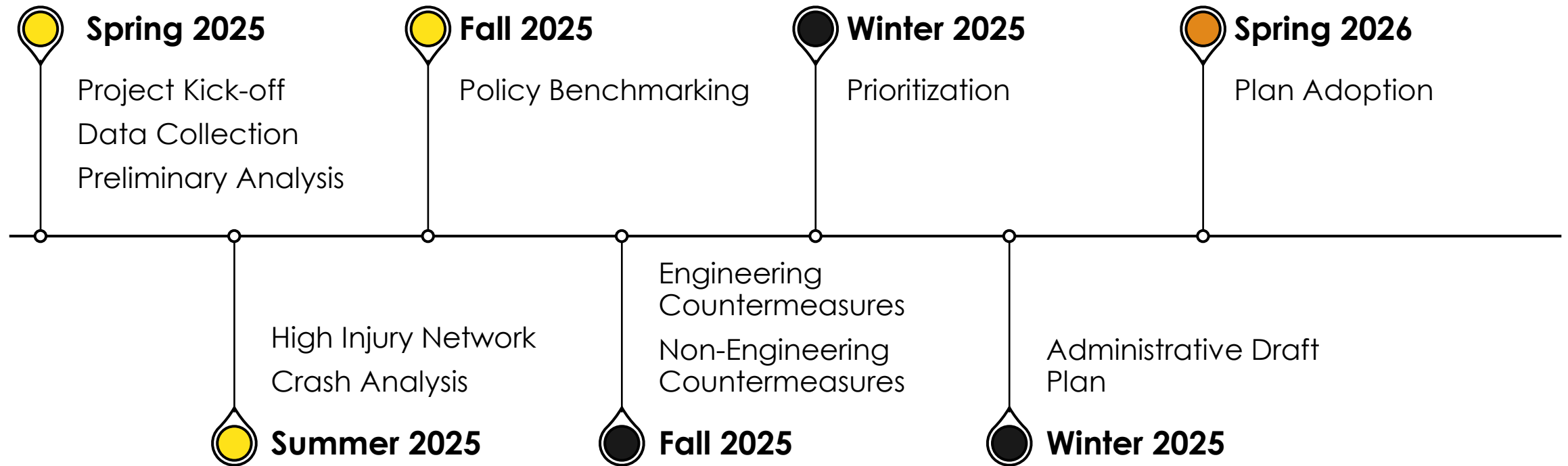
Policy  
Review



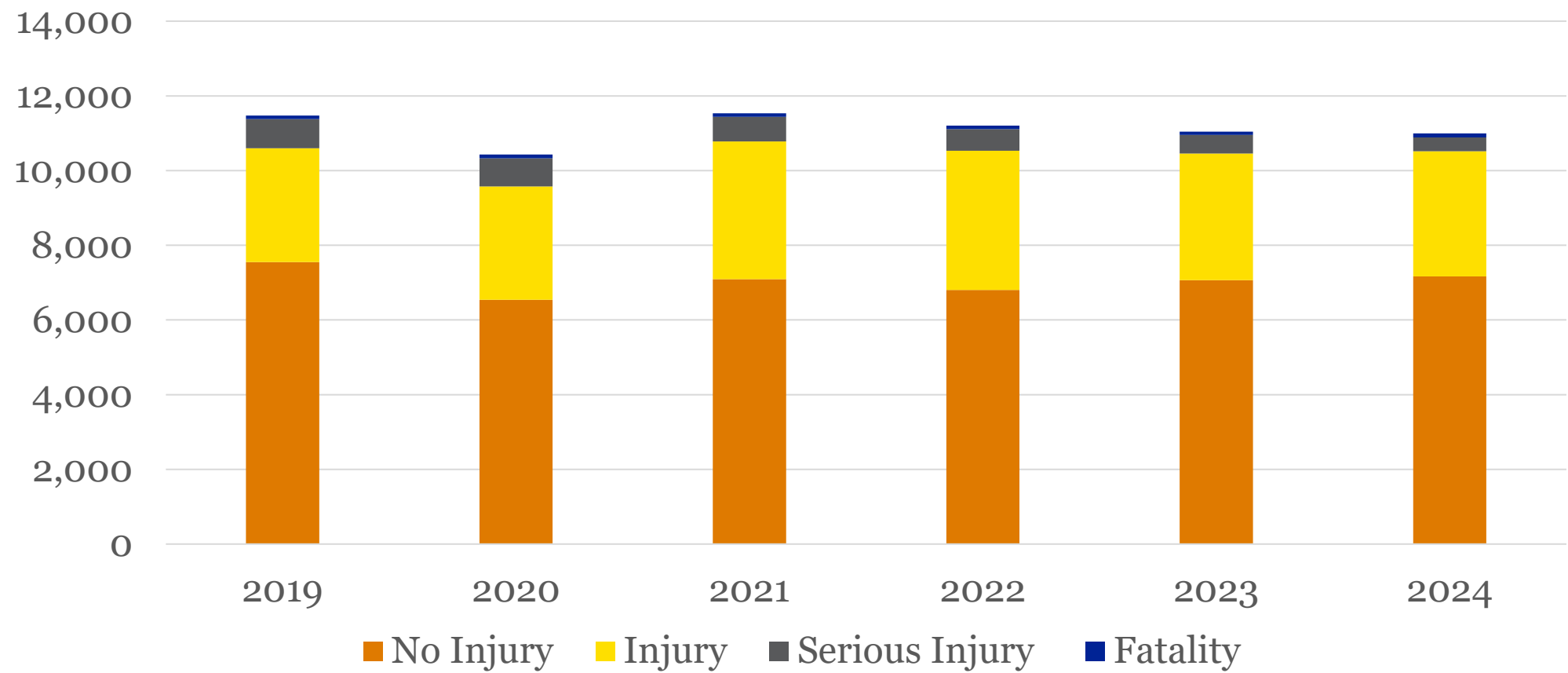
Strategy  
Development



# PROJECT SCHEDULE

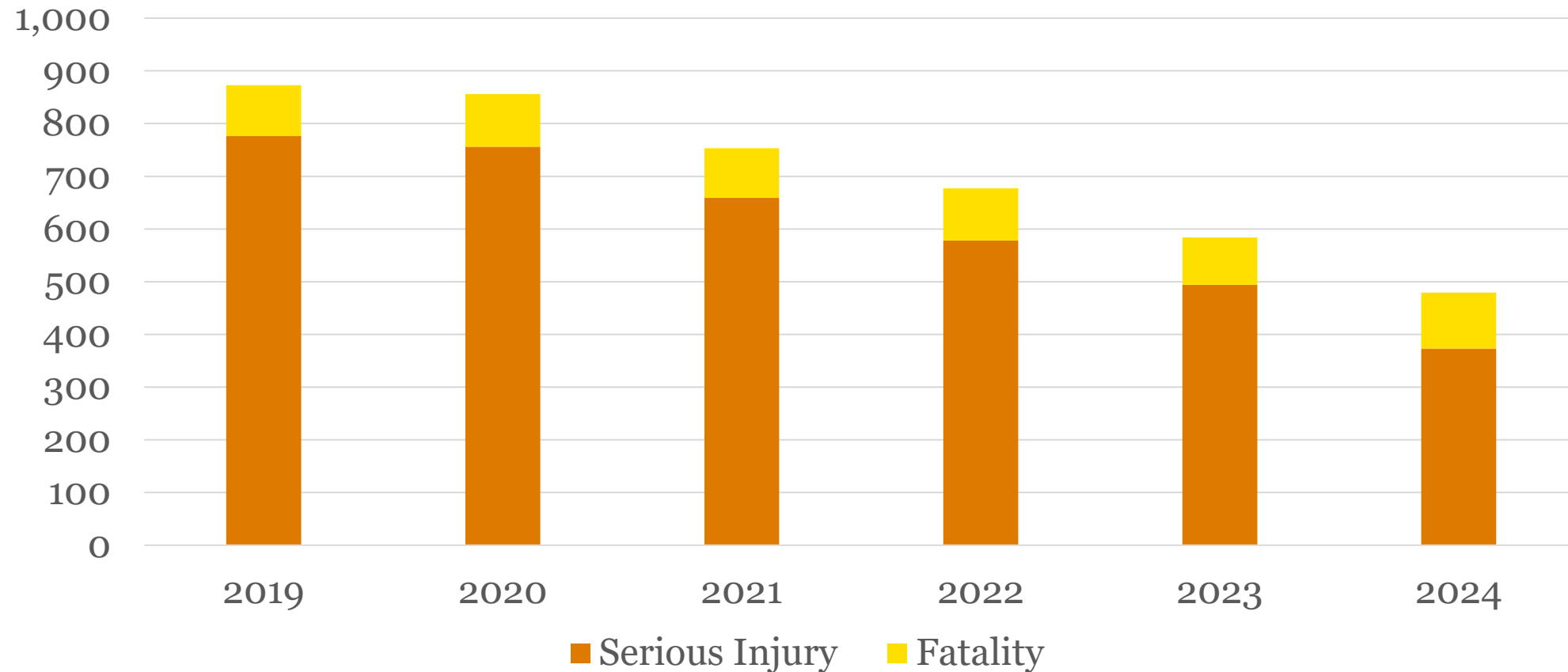


# PASCO COUNTY CRASH SEVERITY BY YEAR (2019 – 2024)

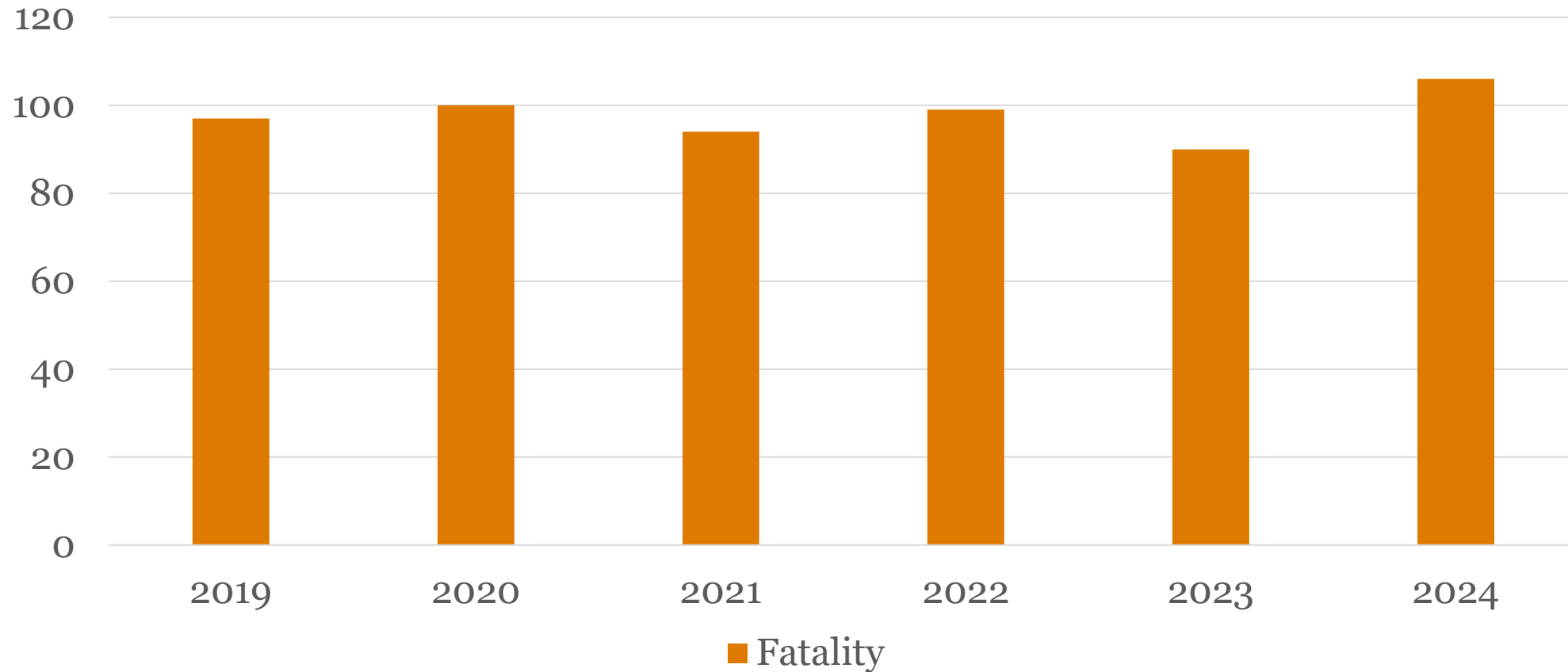


# PASCO COUNTY FATAL AND SEVERE INJURY CRASHES (2019 – 2024)

---



# PASCO COUNTY FATAL CRASHES (2019 – 2024)

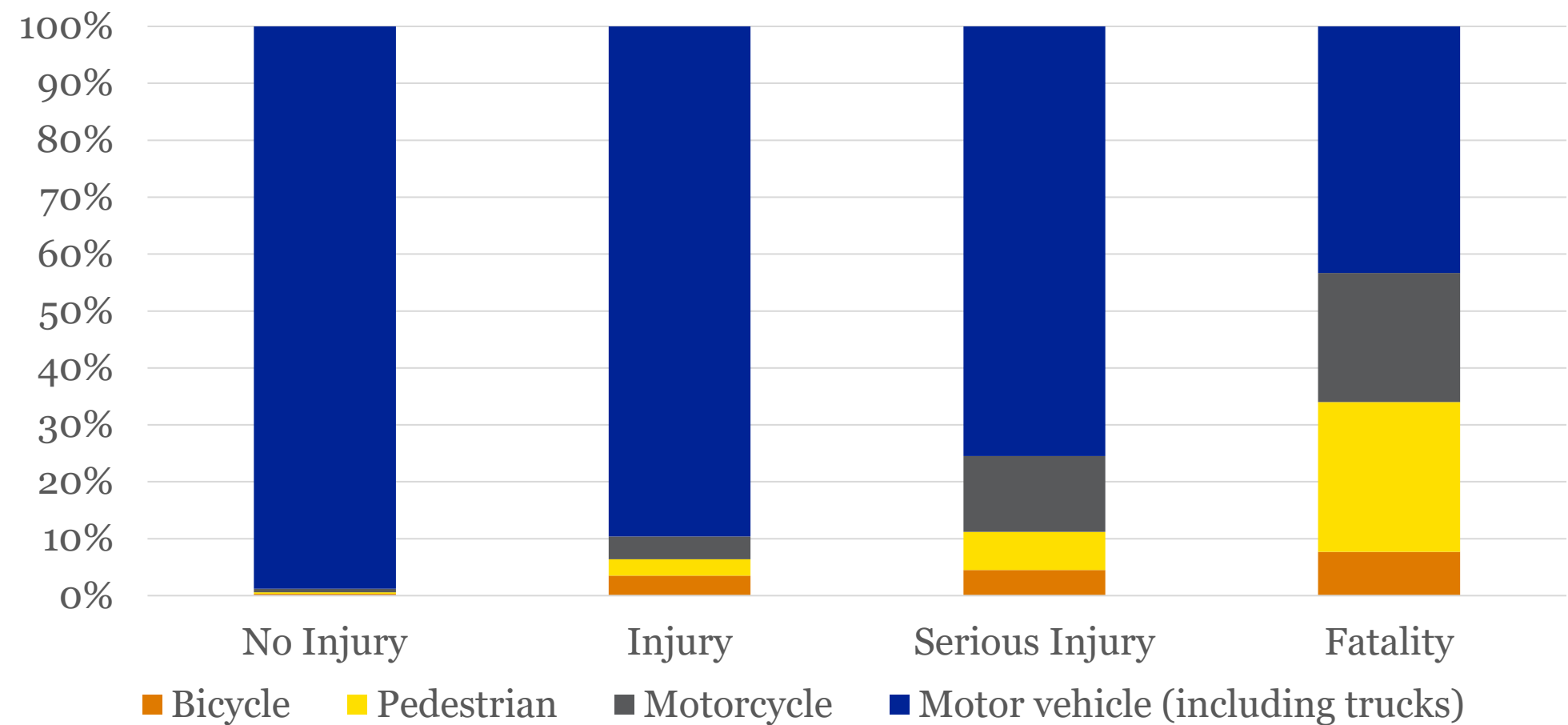






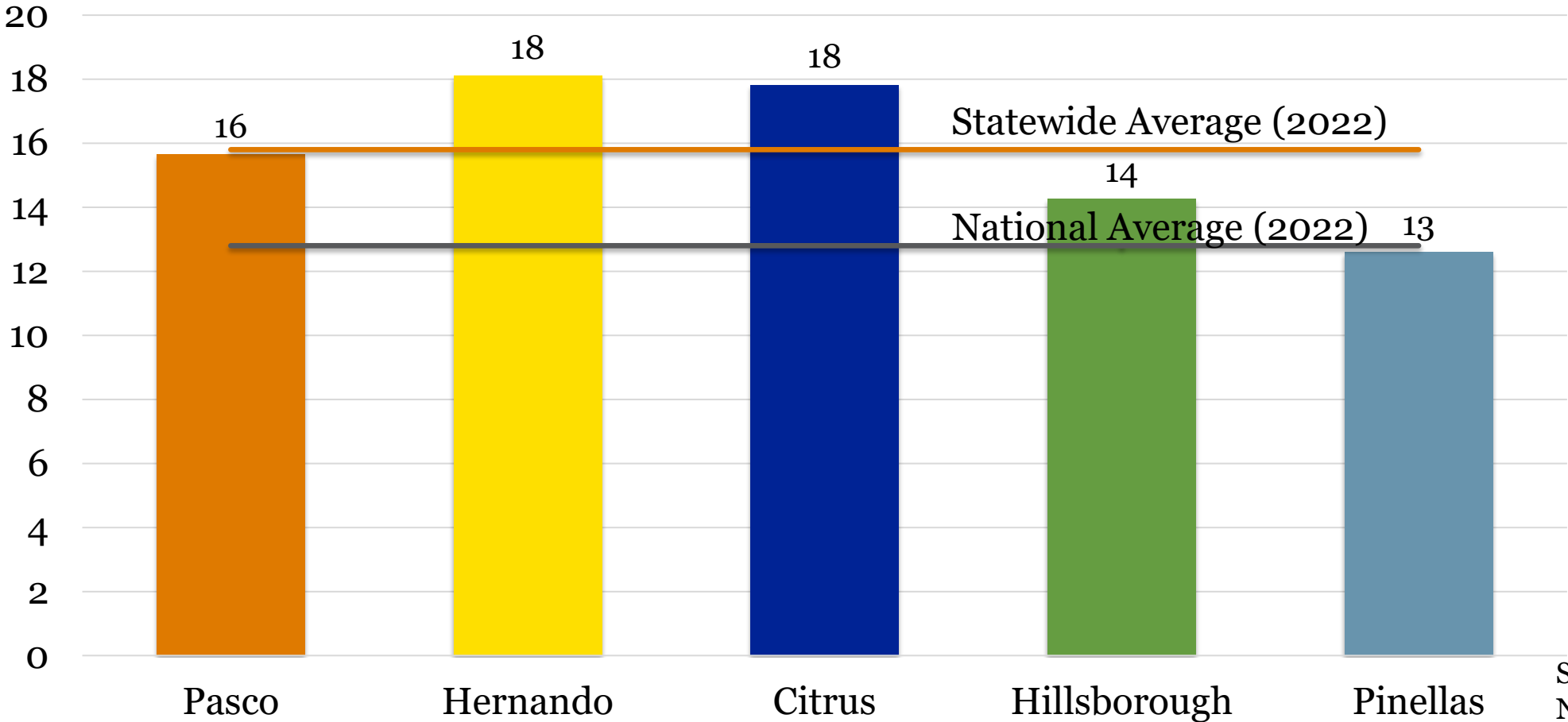
# PASCO COUNTY MODE SHARE BY CRASH SEVERITY (2019 – 2024)

Source: Signal 4 Analytics, 2019 - 2024





# TRAFFIC FATALITIES PER 100,000 POPULATION – AVERAGE 2019-2024



Source: Signal 4  
Note: 2024 Data  
not yet finalized.

# NON-LIMITED ACCESS FACILITY CRASH SUMMARY BY COMMUNITY (2019-2024)

Community	Population	All Crashes	Injury Crashes	Severe Injury	Fatality	Fatality Rate per 100,000 People
Bayonet Point	23,787	2,896	2,659	205	32	22.42
Dade City	8,646	1,468	1,405	58	5	9.64
Elfers	13,877	2,567	2,402	148	17	20.42
Holiday	21,768	3,107	2,882	196	29	22.2
Hudson	5,790	1,261	1,127	105	29	83.48
Jasmine Estates	23,151	2,765	2,587	165	13	9.36
Land O' Lakes	35,929	4,343	4,130	186	27	12.52
New Port Richey	17,708	3,579	3,484	78	17	16
New Port Richey East	11,485	1,084	996	77	11	15.96
Port Richey	3,485	1,332	1,297	24	11	52.61
River Ridge	5,191	329	300	28	1	3.21
San Antonio	1,488	120	108	10	2	22.4
Shady Hills	12,012	988	889	85	14	19.43
St. Leo	2,628	102	96	5	1	6.34
Trinity	19,296	716	676	35	5	4.32
Unincorporated County	333,907	25,187	23,299	1,604	284	14.18
Wesley Chapel	71,965	6,991	6,618	333	40	9.26
Zephyrhills	20,883	4,385	4,266	102	17	13.57
Countywide Average	632,996	63,220	59,221	3,444	555	14.61

Source: Signal 4 Analytics, May 2025. Census Data reflective of 2023 population estimates.

Most of the High Injury Network and HIN intersections are along US-19, SR-54, and US 301.

Most of the High Injury Network and HIN intersections are along US-19, SR-54, and US 301.





# KEY FACTS

More than **HALF** the crashes  
resulting in death and serious  
injury occur on  
**2.5% of our roads**

Average Posted Speed is 45 mph  
38% is in an Area of Persistent  
Poverty (AoPP)  
62% FDOT Roads  
38% County Roads



58 percent of pedestrian  
KSIs



50 percent of bicyclist KSIs



56 percent of motorcyclist  
KSIs



53 percent of motorist KSIs

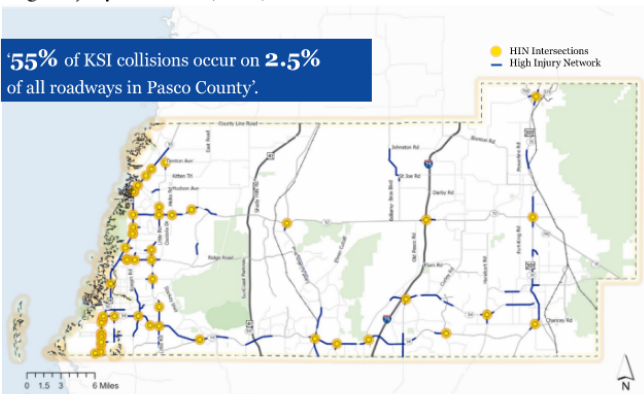
*KSI refers to a crash where someone is killed or severely injured.*

# HIN FACT SHEET

FACT SHEET

## High Injury Network (HIN)

**55% of KSI collisions occur on 2.5% of all roadways in Pasco County.**



### What is a High Injury Network (HIN)?

A HIN is a collection of streets where a disproportionate number of crashes that result in someone being killed or severely injured (KSI) occur. This allows us to focus our efforts on the places where crashes are more likely to result in a KSI.

### How is it Calculated?

The HIN calculations weight crashes differently depending on the mode of travel involved and the severity of the crash. Crash summaries for each half mile roadway segment were calculated with the segments that receive the highest score comprising the HIN. High injury intersections are identified using a similar process as the HIN, considering all crashes within 250 feet of each intersection.

### HIN Facts?

- Average Posted Speed 45 MPH
- 38% of HIN is in Areas of Persistent Poverty
- HIN Includes:
  - 62% State Roads
  - 38% County Roads

### HIN Network Overall Statistics?

	All Roads	HIN	% HIN	Federal Aid Network (FA)	% HIN of FA
CENTERLINE MILES	4,308	107	2.5%	721	15.5%
ALL CRASHES	57,882	31,537	54.5%	57,882	55.6%
KSI	3,866	2,084	53.9%	3,866	55.2%
ALL PED/BIKR/MOTORCYCLE KSI	1,142	636	55.7%	1,142	56.5%
PEDESTRIAN KSI	357	208	58.3%	357	58.5%
BICYCLIST KSI	199	100	50.3%	199	51.3%
MOTORCYCLIST KSI	586	328	56%	586	57%

**55% of KSI crashes occur on 15% of the county's Federal Aid Network**

### How can you get involved?

This planning initiative encourages participation from people of all ages across the county, including community leaders, residents, and visitors. Join us in this quest to eliminate deaths and serious injuries on Pasco County roads. We can save lives when each of us does our part and we all work together.

Visit our website to review crash data, learn more about safety, provide feedback and get details for upcoming events:

Pasco County Safety Action Plan 1 County Fact Sheet

**Areas of Persistent Poverty:** The US Department of Transportation (DOT) has developed a metric to identify communities that experience transportation insecurity through areas of persistent poverty. The longer poverty exists in an area, the more likely the community lacks adequate infrastructure and support services.

[https://www.pascocountyfl.gov/services/mpo/mpo\\_projects.php](https://www.pascocountyfl.gov/services/mpo/mpo_projects.php)



FACT SHEET

### Top 30 High Injury Network Intersection Locations

#	Intersection	Safety Score 1
1.	US Highway 19 at State Road 52	11,253
2.	US Highway 19 at Bonita Road/Mile Stretch Drive	10,344
3.	US Highway 19 at Flora Avenue	9,444
4.	State Road 54 at Seven Springs Boulevard/Rowan Road	7,878
5.	Ridge Road at Little Road	7,589
6.	State Road 52 at Little Road	7,534
7.	US Highway 19 at Hudson Avenue	7,360
8.	US Highway 19 at Buena Vista Lane/Bartlett Road	7,086
9.	US Highway 19 at Moss Road	6,689
10.	US Highway 19 at Old Balleys Bluff Road/State Road 54	6,520
11.	Little Road at Denton Avenue	6,326
12.	US Highway 19 at Sea Ranch Drive	6,256
13.	Land O' Lakes Boulevard at State Road 54	6,249
14.	State Road 54 at Little Road	6,188
15.	US Highway 19 at New York Avenue	5,831
16.	State Road 54 at Grand Boulevard	5,793
17.	US Highway 19 at Sunny Drive	5,683
18.	Call Boulevard at Charney Road	5,451
19.	State Road 56 at Meadow Pointe Boulevard	5,604
20.	State Road 52 at Paradise Point Way	5,422
21.	US Highway 19 at Hammock Road/Ranch Road	5,359
22.	State Road 54/State Road 26 at Wesley Chapel Boulevard	5,239
23.	State Road 51 at Indian Drive/Hicks Road	5,078
24.	US Highway 19 at Tahitian Gardens Circle	5,046
25.	US Highway 19 at Darlington Road	4,959
26.	State Road 54 at Trinity Boulevard/Hoat Pine Avenue	4,870
27.	State Road 54 at Morris Bridge Road/Eiland Boulevard	4,855
28.	State Road 52 at Land O Lakes Boulevard	4,774
29.	State Road 52/Clinton Avenue at US Highway 98	4,761
30.	State Road 54 at Collier Parkway	4,720

1. The **Safety Score** is calculated based on the total number of crashes, the **highest level of injury** sustained in each crash, and the **travel mode** of victims. Crashes that result in death or severe injury, or include a person outside a vehicle have different factors applied. With the Safety Score, a higher score indicates the location experiences a high crash rate and a lower score indicates a lower crash rate. A Safety Score of zero indicates no history of crashes at the location.

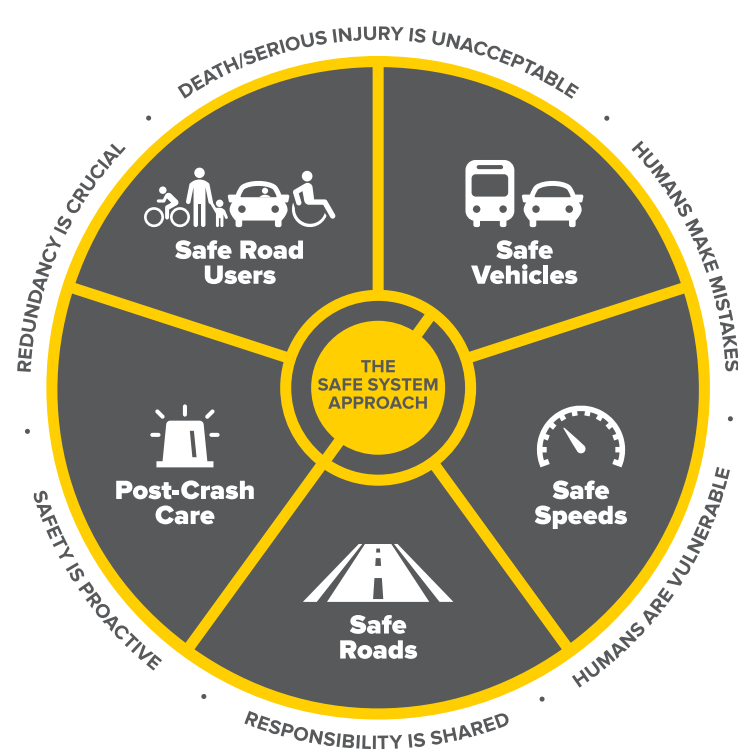
Pasco County Safety Action Plan 1 County Fact Sheet

[https://www.pascocountyfl.gov/services/mpo/mpo\\_projects.php](https://www.pascocountyfl.gov/services/mpo/mpo_projects.php)

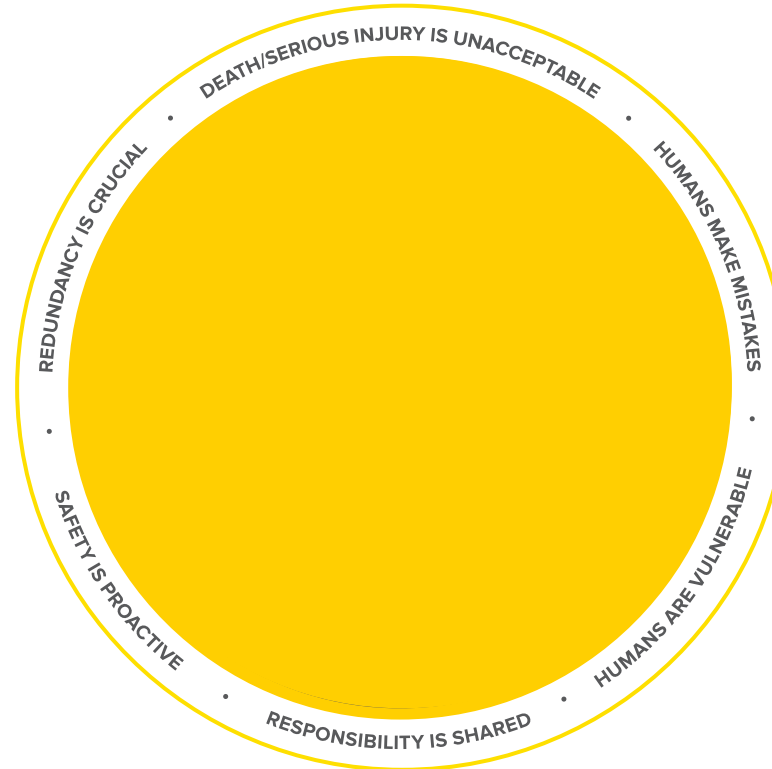


# ZERO IS OUR GOAL. A SAFE SYSTEM IS HOW WE WILL GET THERE.

## SAFE SYSTEM APPROACH



## SAFE SYSTEM PRINCIPLES



## SAFE SYSTEM ELEMENTS



# SAFE SYSTEM PRINCIPLES



Death and Serious injury is unacceptable



Accommodating human mistakes.



Keeping impacts on the human body at tolerable levels.



Responsibility is shared

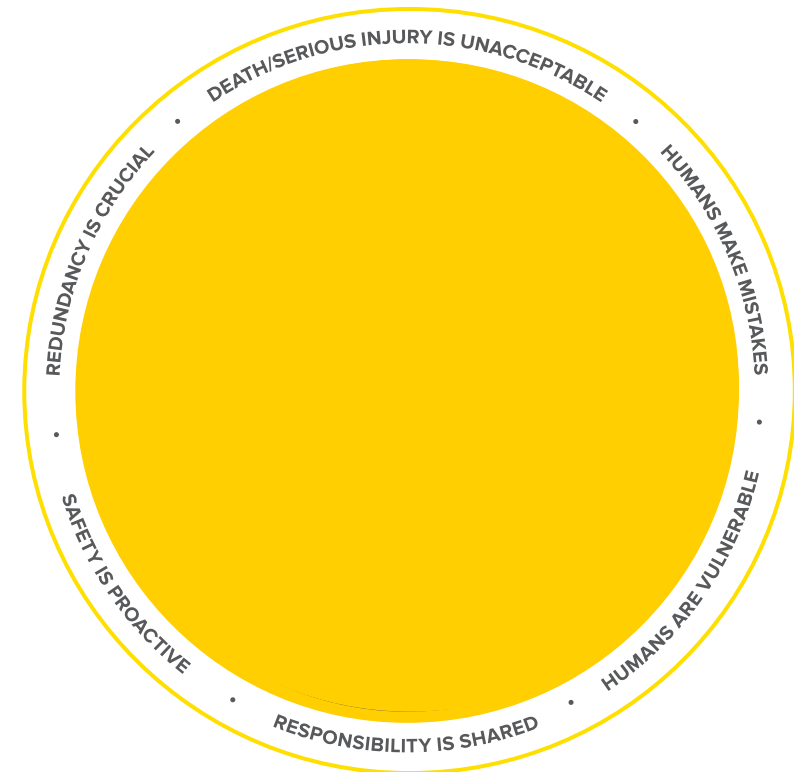


Safety is proactive



Redundancy is crucial

## SAFE SYSTEM PRINCIPLES





# THE 5 SAFE SYSTEM ELEMENTS



Safe Road Users



Safe Vehicles



Safe Speed



Safe Roads

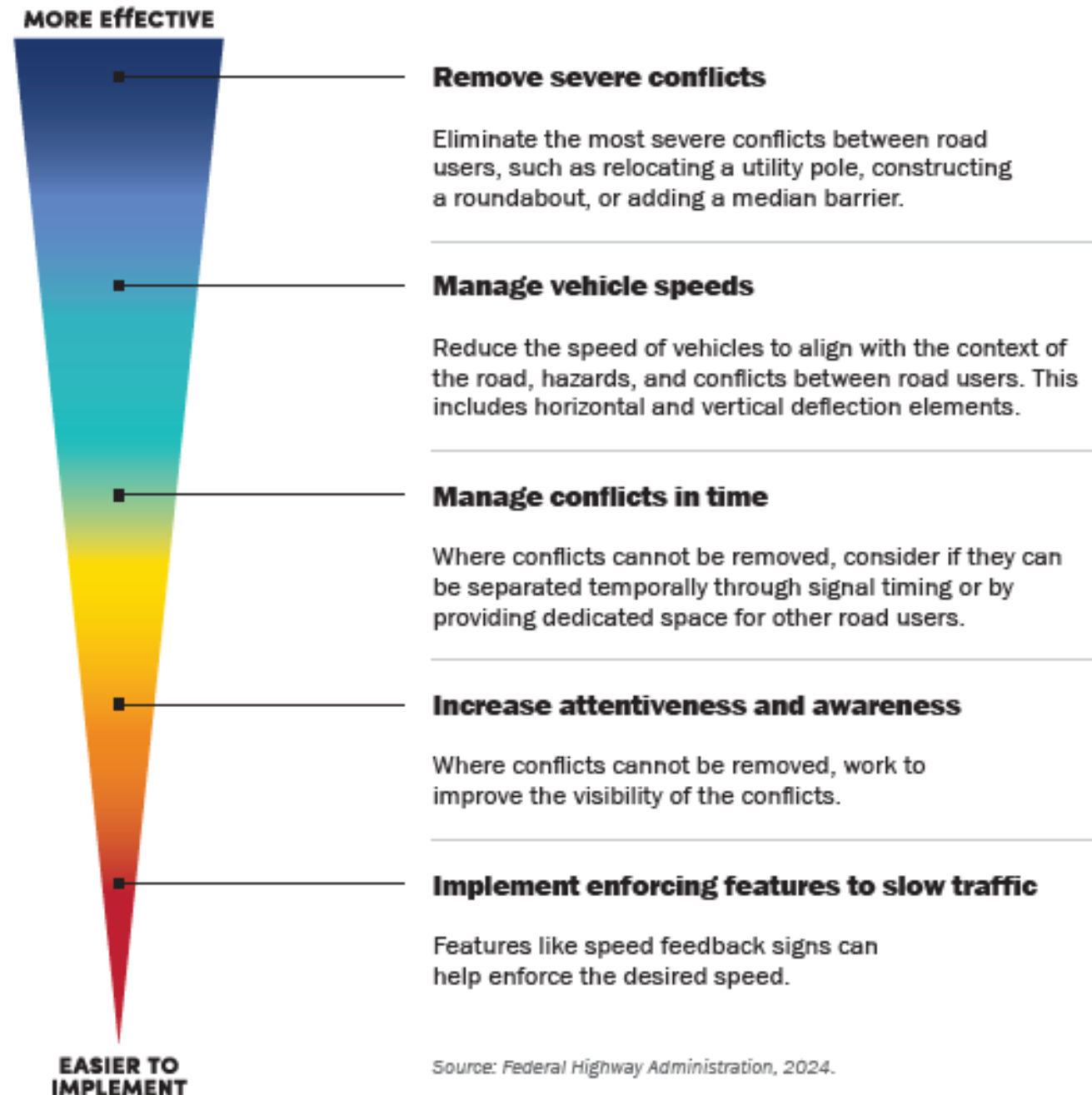


Post Crash Care

## SAFE SYSTEM ELEMENTS




# Safe System Hierarchy



# WHAT CAN YOU DO TO HELP?


## Spread the Word

Share the project information flyer with your neighbors, colleagues and friends!



**Safe Streets Pasco**  
Everyone Gets Home Safe.

**Safe Streets Pasco is all about saving lives on our roads.**




**Street safety affects all of us.**

It doesn't matter how you get around: you likely know someone who's been seriously injured—or even killed—in a traffic crash.

That's because every week, 2 people die and 13 people are seriously injured on Pasco County roads. These numbers are simply unacceptable, and the County is taking action to prevent these tragic losses.

Safe Streets Pasco has a simple goal: saving lives on our roads. Everyone should be able to travel safely around our communities without the fear of death or serious injury.




**Pasco County is taking action.**

This project will establish a comprehensive safety action plan for Pasco County—a roadmap toward safer streets.

The plan will include a high-injury network—locations with the highest risk for fatal and serious injury crashes—so we can focus on our biggest problem areas. For these areas, the plan will identify priority projects that have the most safety impact.

We'll also focus on education and enforcement to highlight behaviors that lead to serious crashes. When the plan is done, we'll have a set of life-saving projects that are ready for funding and implementation.




**We need your help for safer streets!**

We can make progress saving lives in the fight for traffic safety by working together—each doing our part.

Whether you're old or young, resident or visitor, we want all members of our community to have a voice in this important initiative. Your voice, backed by others, to learn more about the project, share your ideas, and find out about upcoming events. By doing so, you'll be helping all of us in the quest to eliminate deaths and serious injuries from Pasco County roads.

MyPasco.net/safestreetspasco



## Provide Feedback


Visit the online survey to provide your feedback and ideas.

## Attend a meeting


Attend a Task Force or other safety meeting.

## Model Good Behavior

When you use transportation system, model good behavior!



**Safe Streets Pasco**  
Because Everyone Deserves to Get Home Safe



Overview

Take the Survey

Provide Mapped Feedback

### Introduction

Pasco County is committed to making roads safer for everyone, whether you drive, walk, bike, ride a motorcycle or use a wheelchair. As part of our **Safety Action Plan**, referred to as Safe Streets Pasco, we are identifying ways to reduce serious injury and fatal crashes on our roadways to build a safer, more connected community. Your input is critical to this effort. By sharing your experiences, concerns and ideas, you can help us understand where transportation safety issues occur in your community and what improvements matter most to you and your family.

This survey will take only a few minutes to complete. Your responses will directly inform the strategies and projects that will guide safety investments in Pasco County in the years to come.

### Need Help?

If you need assistance submitting comments, please contact Angel C. Avila. Please leave your preferred contact information, and a team member will reach out to assist you.

Name Angel C. Avila  
Email [aaavila@pascocountyfl.net](mailto:aaavila@pascocountyfl.net)

Questions or  
Comments?

## Contact us:

Angel Avila  
Pasco MPO

[aavila@pascocountyfl.net](mailto:aavila@pascocountyfl.net)

Kathrin Tellez  
Fehr & Peers

[k.tellez@fehrandpeers.com](mailto:k.tellez@fehrandpeers.com)





**SAFE STREETS PASCO**  
*EVERYONE GETS HOME SAFE.*

**THANK YOU!**